

CPM@SHAREPOINT

Collaborative Project Management

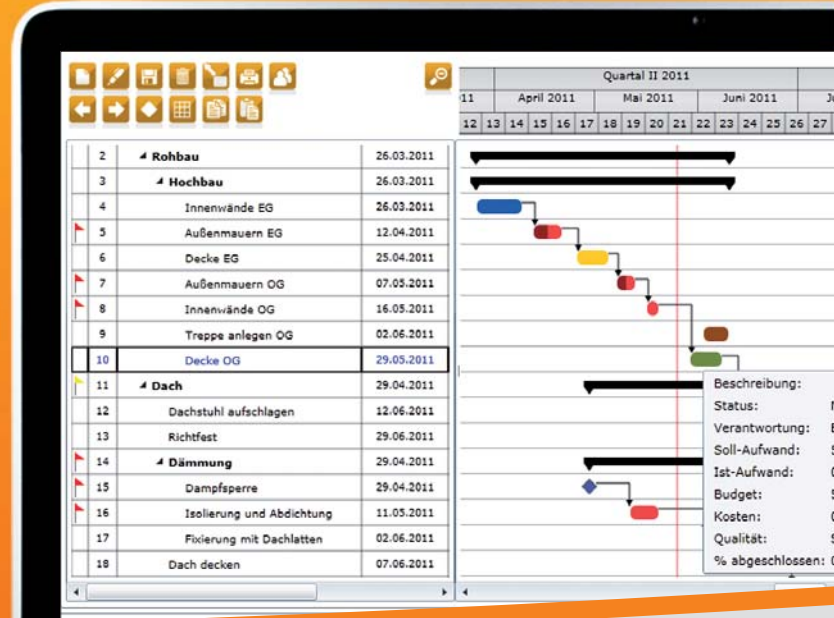


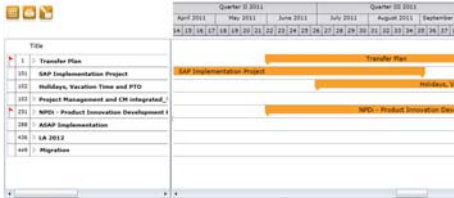
LINTRA's project management system CPM@SharePoint is a web-based tool supported by Microsoft SharePoint technology. Aside from the classic functions of project management, CPM@SharePoint efficiently supports project team collaboration as well as project and risk documentation.

CPM@SharePoint is available with varying functionalities for small and mid-size businesses, as well as for complex management of multiple projects by accommodating spread out structures and providing elaborate resource management.

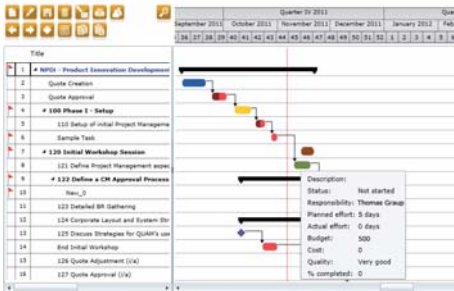
The three CPM-Editions, CPM basic, CPM professional and CPM enterprise, represent the standard framework and processes for project management, providing simple, familiar, and uniform environments for project team members regardless of expertise.

See the following pages to find out more about the functions* of CPM@SharePoint.

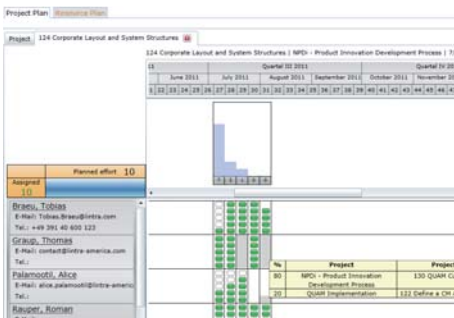




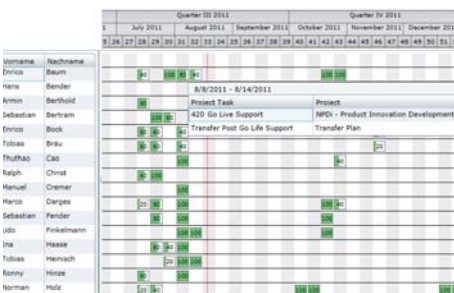
Project Overview



Gantt Chart



Resource Planning



Employee Workload

Project Portfolio

Access and orientation made easy.

The CPM@SharePoint portal is the interface for navigation to projects as well as management of project life cycles. The portfolio view uses easily recognizable icons for an instant overview of all projects in the system. The project overview shows consolidated key parameters for and at-a-glance project status, and shows percentages to which staff members are involved in projects.

Silverlight Gantt Chart

Scheduling of project activities using a familiar tool.

In CPM@SharePoint, the scheduling of sub-projects and project activities is done using proven Gantt chart functions. It allows you to define and sequence sub-projects and activities, as well as estimate resources, define durations, determine relationships to predecessors and successors, set structures such as milestones and buffers and update statuses for each. Vital information about individual activities is easily visible with a mouse-over within the Gantt chart.

Resource Planning

Manage resource allocations across multiple projects.

CPM@SharePoint enables you to schedule resources for project activities depending on their availability. Integrating information across multiple projects, a graphical view of employee's availability and bookings allows easy scheduling and depicts to what projects and project activities project team members are assigned, facilitating disposition of your specific project.

Issue Management and Change Control

Facilitates tracking and analysis in an integrative environment.

Issues and scope changes can be tracked, assigned, analyzed, and approved within CPM@SharePoint, providing comprehensive visibility to potential project impacts. Stakeholders are informed of risks, decisions, and resolutions automatically via e-mail. Issues and changes can be linked to specific project activities, creating visual status indicators by activity.

Reference Projects

Project templates save time with project startup.

CPM@SharePoint enables you to re-use previously defined projects or parts thereof. Templates can be created to maintain consistency of standards within groups of similar projects. Dependencies and associations, which are part of the template, are transferred to the new project for quick project definitions. This eliminates the time consuming task of creating project units while ensuring that your project methodologies are applied.

Project Documentation

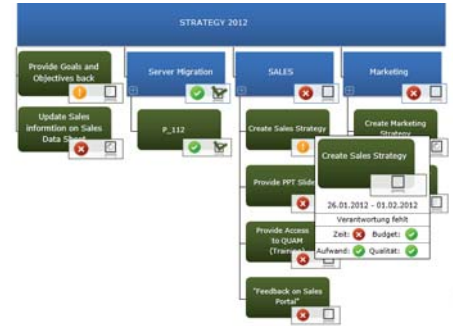
Central document administration, decentralized processing.

CPM@SharePoint enables you to work jointly on project documents. Results are linked directly to the work packages, and their documentation is structured by custom or renowned existing systems (e.g. Prince2-Standard). Project documents are centralized and made available to the project team. Processing is completed using user and role definitions and check-in/check-out procedures.

Silverlight Work Breakdown Structure

Graphic depiction for an easy overview.

CPM@SharePoint automatically depicts the structure of sub-projects and project activities as a graphic independent of a time reference. This structure provides simple, focused navigation and supports project management by providing a variety of options for depiction. Whether sub-projects or project activities are on or off track is immediately visible.



Work Breakdown Structure

Meeting Management

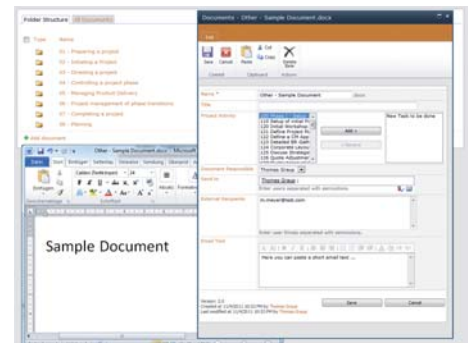
Easy meeting administration and follow-up.

CPM@SharePoint helps organize and document meetings. Meetings can be easily created, with invites and confirmations sent and responses tracked through Outlook. Tasks, changes and issues can be filed and supplemented with additional documents. All information pertaining to a meeting can be accessed at any time using the calendar or respective lists.

My Site

Responsibilities at-a-glance.

In CPM@SharePoint, every team member has a personalized site summarizing his or her roles, responsibilities, and contributions within the project. Assigned ToDos, change request, issues, risks and activities for which a team member is responsible are displayed on their MySite page. Assigned approval requests as well as meetings with required or optional attendance are also depicted. This page provides a consolidated overview to keep every team member on track.



Project Documentation

Risk Management

Recognize and manage project risks proactively.

CPM@SharePoint supports the identification and evaluation of project risks and planned responses to them. You record the known risks, determine threshold values, formulate standard reactions and link these to project tasks. With CPM@SharePoint project risks are actively managed to increase the probability and impact of positive events, and decrease the probability and impact of negative events.

ToDo List

Manage project tasks effectively.

In CPM@SharePoint, project ToDos can be linked to project activities and team members. New ToDos are automatically e-mailed to team members and appear on their personalized project start page and MySite. A status stamp shows whether assigned tasks were completed within the given time frame or whether defined tolerances were exceeded.

Status	Title	Start Date	Due Date	Responsible
Not started	Provide PPT Slides	2/6/2012	2/19/2012	Thomas Gr
Completed	Create Sales Strategy	1/26/2012	2/1/2012	Manuela K

Status	Title	Assigned To	Processing Status
In Progress	Feedback on Sales Portal	Thomas Group	In Progress

Status	Title	Assigned To	Due Date	Issue Status	Impact
Not OK	Slides not OK	Manuela K	2/29/2012	2/1/2012	High

My Site

Microsoft® SharePoint® is a collaborative intranet platform that supports numerous areas of application. As a building block system with various options, it can be combined with existing LINTRA applications.



BPM meets Collaboration: With **QUAM 2.0**, you can easily model and depict organizational processes and structures, and publish the complete governance system in multiple languages.



All three editions of **CPM@SharePoint** contain web-based tools to facilitate planning, communication and collaboration of multiple projects.



Whether you need a tool to help manage risks, ideas or an upcoming audit, vacation schedules or a ticket system, LINTRA offers these and many other products for your SharePoint platform.

CPM and many other SharePoint applications and web parts are now available in your one stop shop for SharePoint products at www.SharePointPlus.com.

“We support you technologically and methodically with the help of cutting edge tools and concepts.”



LINTRA Solutions GmbH

Otto-von-Guericke-Str. 87a
39104 Magdeburg
Germany
Tel. +49. 391. 400 640
E-mail: info@lintra.de

LINTRA Schweiz AG

Alte Stationsstrasse 22
8154 Oberglatt/Zürich
Switzerland
Tel. +41.44. 586 6066
E-mail: info@lintra.ch

LINTRA America, LLC

26905 Monterrey Ave.
Valencia, CA 91355
USA
Tel. +1. 877. 782 6452
E-mail: info@lintra.com

LINTRA Bulgaria OOD

Bul. Evlogie Georgiev 81
1142 Sofia
Bulgaria
Tel. +359. 2. 981 0630
E-mail: info@lintra.bg

* For a detailed description of the functions contained in each edition, please see the QUAM 2.0 Functional Overview.